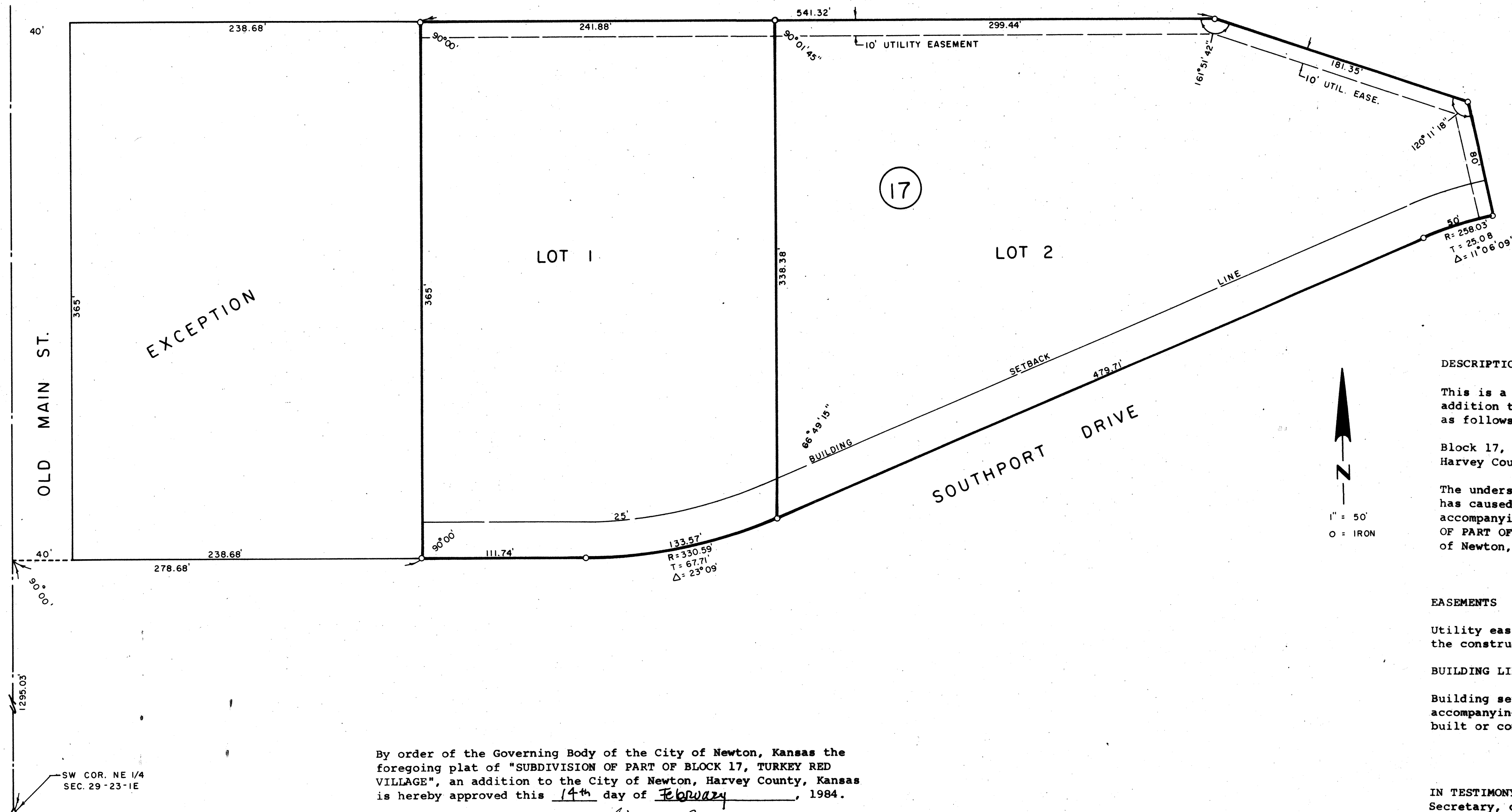


SUBDIVISION OF PART OF BLOCK 17
TURKEY RED VILLAGE
AN ADDITION TO THE CITY OF NEWTON, HARVEY COUNTY, KANSAS



By order of the Governing Body of the City of Newton, Kansas the foregoing plat of "SUBDIVISION OF PART OF BLOCK 17, TURKEY RED VILLAGE", an addition to the City of Newton, Harvey County, Kansas is hereby approved this 14th day of FEBRUARY, 1984.

Billie Butler, Mayor
John L. Linder, City Clerk

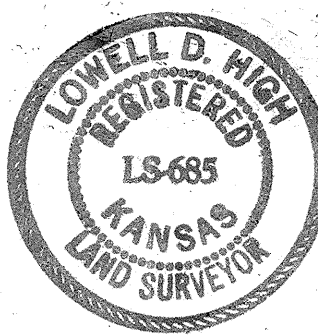
Enter on transfer record this 16th day of FEBRUARY, 1984.
Margaret Wright, County Clerk

I hereby certify the details of this plat to be correct this 13TH day of FEBRUARY, 1984.

Lowell D. High, Land Surveyor
Lowell D. High

Recorded this 16th day of FEBRUARY, 1984, at 4 P. M., in Book 301, Page 582.

James Hays, Register of Deeds
County of Harvey



DESCRIPTION

This is a subdivision of Part of Block 17, Turkey Red Village, an addition to the City of Newton, Harvey County, Kansas, Described as follows:

Block 17, Turkey Red Village, an addition to the City of Newton, Harvey County, Kansas, EXCEPT the west 238.68 feet, thereof.

The undersigned proprietor of the above described tract of land has caused the same to be subdivided in the manner shown on the accompanying plat which subdivision shall be known as "SUBDIVISION OF PART OF BLOCK 17, TURKEY RED VILLAGE", an addition to the City of Newton, Harvey County, Kansas.

EASEMENTS

Utility easements as indicated on the plat are hereby granted for the construction and maintenance of all public utilities.

BUILDING LINES

Building setback lines are hereby established as shown on the accompanying plat and no building or portion thereof shall be built or constructed between this line and the street line.

IN TESTIMONY WHEREOF: Max H. Graber, President and Jean W. Coleman, Secretary, of Land Investors, Inc., have caused these presents to be signed this 13th day of FEBRUARY, 1984.

Max H. Graber, President
Land Investors, Inc.
Jean W. Coleman, Secretary
Land Investors, Inc.

State of Kansas, County of Harvey, SS.

The foregoing instrument was acknowledged before me this 13th day of FEBRUARY, 19 84, by Max H. Graber, President and Jean W. Coleman, Secretary.

Richard L. Strick, Notary Public

My Commission Expires: December 16, 1986



By order of the Newton-North Newton Area Planning Commission the foregoing plat of "SUBDIVISION OF PART OF BLOCK 17, TURKEY RED VILLAGE", an addition to the City of Newton, Harvey County, Kansas is hereby approved this 14th day of FEBRUARY, 1984.

Newton-North Newton Area Planning Commission

Dave L. Beyer, Chairman
John K. Sherry, Secretary

Be it remembered that the plat of "SUBDIVISION OF PART OF BLOCK 17, TURKEY RED VILLAGE", an addition to the City of Newton, Harvey County, Kansas has been submitted to me and that the same is hereby approved this 15th day of FEBRUARY, 1984.

Richard B. Waller, City Attorney
of Newton, Kansas