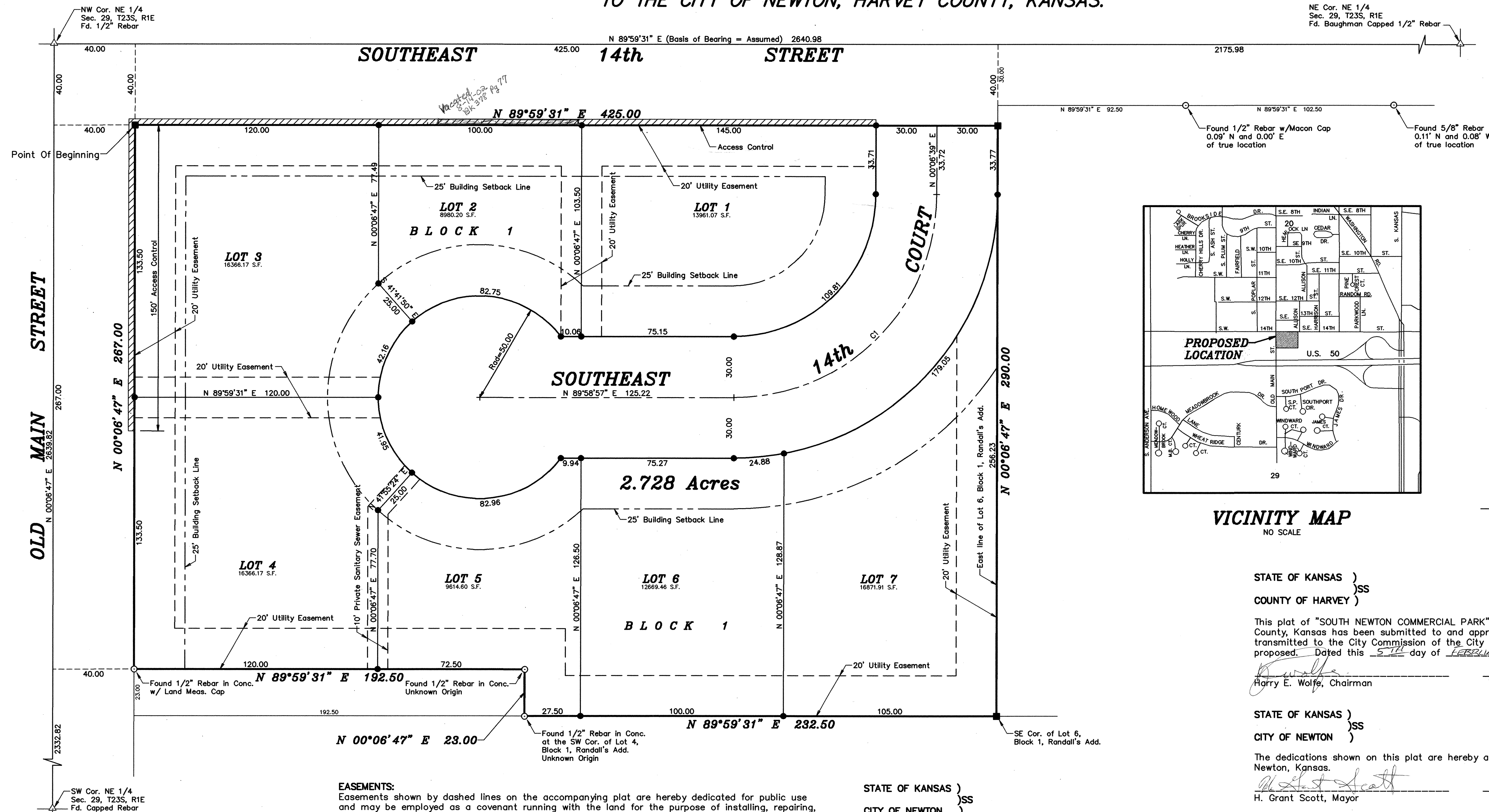


# SOUTH NEWTON COMMERCIAL PARK

A REPLAT OF A PORTION OF BLOCK 1, RANDALL'S ADDITION  
TO THE CITY OF NEWTON, HARVEY COUNTY, KANSAS.



**DESCRIPTION:**  
A portion of Block 1, Randall's Addition to the City of Newton, Harvey County, Kansas more particularly described as follows:  
Commencing at the Northwest corner of the Northeast Quarter of Section 29, Township 23 South, Range 1 East of the 6th Principal Meridian, Harvey County, Kansas, said point being the Northwest corner of said Randall's Addition; thence with an assumed bearing of North 89°59'31" East along the North line of said Northeast Quarter 40.00 feet to the East right-of-way line of Old Main Street extended; thence South 00°06'47" West parallel with the West line of said Northeast Quarter and along the East right-of-way line of Old Main Street and the extensions thereof 40.00 feet to the point of beginning; thence North 89°59'31" East parallel with the North line of said Northeast Quarter 425.00 feet to the East line of Lot 6 of said Block 1; thence South 00°06'47" West parallel with the West line of said Northeast Quarter 290.00 feet to the Southeast corner of said Lot 6; thence South 89°59'31" West parallel with the North line of said Northeast Quarter 232.50 feet to the Southwest corner of Lot 4 of said Block 1; thence North 00°06'47" East parallel with the West line of said Northeast Quarter 23.00 feet; thence South 89°59'31" West parallel with the North line of said Northeast Quarter 192.50 feet to the East right-of-way line of Old Main Street; thence North 00°06'47" East parallel with the West line of said Northeast Quarter and along the East right-of-way line of Old Main Street 267.00 feet to the point of beginning containing 2.728 Acres.

**SURVEYOR'S CERTIFICATE:**  
I hereby certify this plat to be a true, correct and complete representation of the property described hereon, and that the lots, blocks and subdivision corners have been established and marked with permanent monuments as shown herein, as surveyed under my supervision, this 27th day of February, 2002.  
Daniel E. Garber RLS #683

**EASEMENTS:**  
Easements shown by dashed lines on the accompanying plat are hereby dedicated for public use and may be employed as a covenant running with the land for the purpose of installing, repairing, reinstalling, replacing and maintaining sewers, waterlines, gas lines, electric lines and poles, telephone lines and poles and other forms and types of public utilities now or hereafter generally utilized by the public.

**STREETS:**  
Streets shown on this plat and not heretofore dedicated to the public are hereby so dedicated.

**BUILDING LINES:**  
Building lines or setback lines are hereby established as shown on the accompanying plat and no building or portion thereof shall be built or constructed between this line and the street line.

**DEDICATION:**  
The undersigned, Victor H. Loeback, Trustee of the Victor H. Loeback Revocable Trust, does hereby certify that he is the owner of the property described hereon and has subdivided the same into Lots and Blocks in the manner shown on the accompanying plat and hereby makes the above recited dedications. Said subdivision shall be known as "SOUTH NEWTON COMMERCIAL PARK", a replat of a portion of Block 1, Randall's Addition to the City of Newton, Harvey County, Kansas.  
Victor H. Loeback

STATE OF KANSAS )  
COUNTY OF HARVEY )

The foregoing instrument was acknowledged before me this 1st day of March, 2002 A.D., by Victor H. Loeback, Trustee of the Victor H. Loeback Revocable Trust.

My Commission Expires 10-11-02  
Barbara A. Brown  
Notary Public

BARBARA A. BROWN  
Notary Public - State of Kansas  
My Comm. Expires 10-11-02

STATE OF KANSAS )  
CITY OF NEWTON )

I hereby certify that I have reviewed the surveyed plat and certify said plat to be in compliance with the requirements of K.S.A. 58-2005.

Jeffery D. Smith  
Registered Land Surveyor

STATE OF KANSAS )  
COUNTY OF HARVEY )

This is to certify that this instrument was filed for record in the Register of Deeds Office on the 19th day of March, 2002, at 10:00 A.M. and the same is duly recorded as follows:

Margaret A. Hermstein, Register of Deeds

Michelle Schuckman, Deputy

Entered on Transfer Record this 19th day of March, 2002.  
Roberta Schneider, Dep. Clerk  
Margaret Wright, County Clerk

STATE OF KANSAS )  
COUNTY OF HARVEY )

This plat of "SOUTH NEWTON COMMERCIAL PARK", a replat of a portion of Block 1, Randall's Addition to the City of Newton, Harvey County, Kansas has been submitted to and approved by the Newton-North Newton Area Planning Commission and is hereby transmitted to the City Commission of the City of Newton, Kansas with the recommendation that such plat be approved as proposed. Dated this 5th day of February, 2002.

Harry E. Wolfe, Chairman

Timothy R. Johnson, Secretary

STATE OF KANSAS )  
CITY OF NEWTON )

The dedications shown on this plat are hereby accepted and this plat is hereby approved by the City Commission of the City of Newton, Kansas.

H. Grant Scott, Mayor

Ronald R. Ahmsmuhs, City Clerk

STATE OF KANSAS )  
CITY OF NEWTON )

This Plat of "SOUTH NEWTON COMMERCIAL PARK", a replat of a portion of Block 1, Randall's Addition to the City of Newton, Harvey County, Kansas has been submitted to me and the same is hereby approved this 12th day of March, 2002.

Suzanne C. S. Loomis, P.E., City Engineer

STATE OF KANSAS )  
CITY OF NEWTON )

This Plat of "SOUTH NEWTON COMMERCIAL PARK", a replat of a portion of Block 1, Randall's Addition to the City of Newton, Harvey County, Kansas has been submitted to me and the same is hereby approved this 12th day of March, 2002.

Robert D. Myers, City Attorney

FINAL PLAT		Description: SOUTH NEWTON COMMERCIAL PARK	
Prepared By: GSS		Garber Surveying Service, P.A.	
423 West 1st Ave. Hutchinson, Kansas 67501		129 E. Broadway, Suite 300 Newton, Kansas 67114	
Phone (620) 665-7832 • FAX (620) 663-7401		Phone (316) 283-5053 • FAX (316) 283-5073	
Drawn By: RDB	Scale: 1"=30'	Date of Field Work: December 8, 2001	Job No: G01-709
Checked By: DEG	Date: 01/17/2002	Sheet 1 of 1 Sheet(s)	